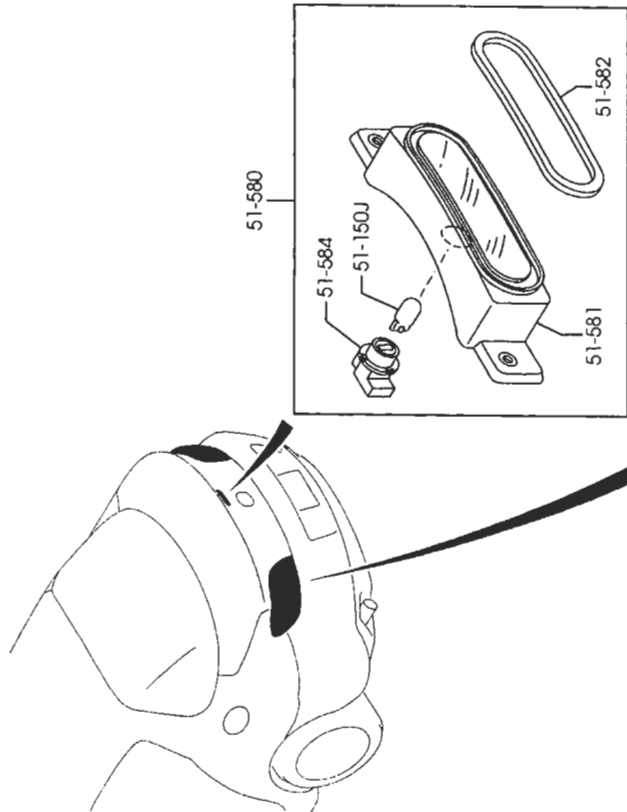


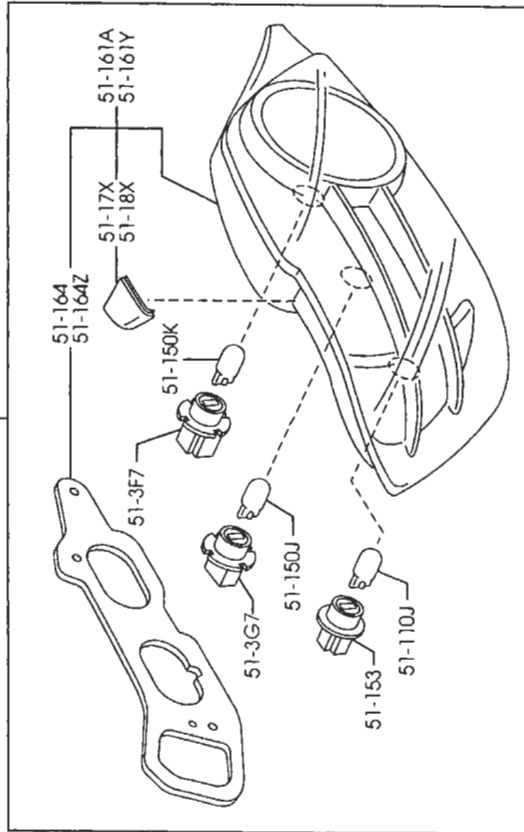
## 5110A -1 REAR COI



| PART NO.     | QTY | MODEL/RESTRICTION           | MODEL/RESTRICTION           | MODEL/RESTRICTION | FROM - TO |
|--------------|-----|-----------------------------|-----------------------------|-------------------|-----------|
| 99700-6210Y  | 2   | BULB<br>12V 21W             | AMPOULE<br>12V 21W          |                   |           |
| FE01-51-1500 | 1   | LAMP(R),RR COMB.            | LAMPE(D),COMBINAISON<br>ARR |                   |           |
| 99700-6210   | 3   | BULB<br>12V 21W             | AMPOULE<br>12V 21W          |                   |           |
| 99700-8215   | 2   | BULB<br>12V 21/5W           | AMPOULE<br>12V 21/5W        |                   |           |
| GJ6A-51-074  | 2   | SOCKET,RR.COMB.             | DOUILLE                     |                   |           |
| FE01-51-1600 | 1   | LAMP(L),RR COMB.            | LAMPE(G),COMBIN. AR         |                   |           |
| FE01-51-1700 | 1   | LENS & BODY(R),RR CO<br>MB. | LENTILLE ET CORPS(D)        |                   |           |
| FE01-51-1800 | 1   | LENS & BODY(L),RR CO<br>MB. | LENTILLE ET CORPS(G)        |                   |           |
| FI51-51-153  | 1   | GASKET(R),RR.COMB.          | JOINT (D)                   |                   |           |
| FI51-51-163  | 1   | GASKET(L),RR.COMB.          | POCHETTE (G)                |                   |           |
| FI51-51-174  | 1   | COVER(R),RR COMB.           | COUVERCLE(D),COMB. A<br>R   |                   |           |
| FI51-51-184  | 1   | COVER(L),RR COMB.           | COUVERCLE(G),COMB. A<br>R   |                   |           |
| GI9S-51-3G7  | 2   | SOCKET                      | DOUILLE                     |                   |           |



51-150B  
51-160



| PART NO.     | QTY | MODEL/RESTRICTION            | MODEL/RESTRICTION           | MODEL/RESTRICTION | FROM-TO |
|--------------|-----|------------------------------|-----------------------------|-------------------|---------|
| 51-367       | 2   | SOCKET(L), TRUNK LID LAMP    | DOUILLE(G), LAMPE COF F COU |                   |         |
| GG2M-51-367  |     |                              |                             |                   |         |
| 51-580       | 1   | LAMP, STOP-HI. MOUNT.        | FEU, STOP-IN. ELEV.         |                   |         |
| F151-51-580A |     |                              |                             |                   |         |
| 51-581       | 1   | LENS & BODY, LAMP-H. M. STOP | OBJECTIF & CORPS, LAMPE     |                   |         |
| F151-51-58XA |     |                              |                             |                   |         |
| 51-582       | 1   | GASKET, STOP LAMP-HI. MOUNT  | JOINT ETAN. FEU STOP-ELEVE  |                   |         |
| F151-51-592A |     |                              |                             |                   |         |
| 51-584       | 1   | SOCKET, STOP LAMP-HI. MOUNT  | DOUILLE, FEU STOP-ELEVE     |                   |         |
| GJ6A-51-367  |     |                              |                             |                   |         |