

STEERING WHEEL AND COLUMN REMOVAL/INSTALLATION

WARNING:

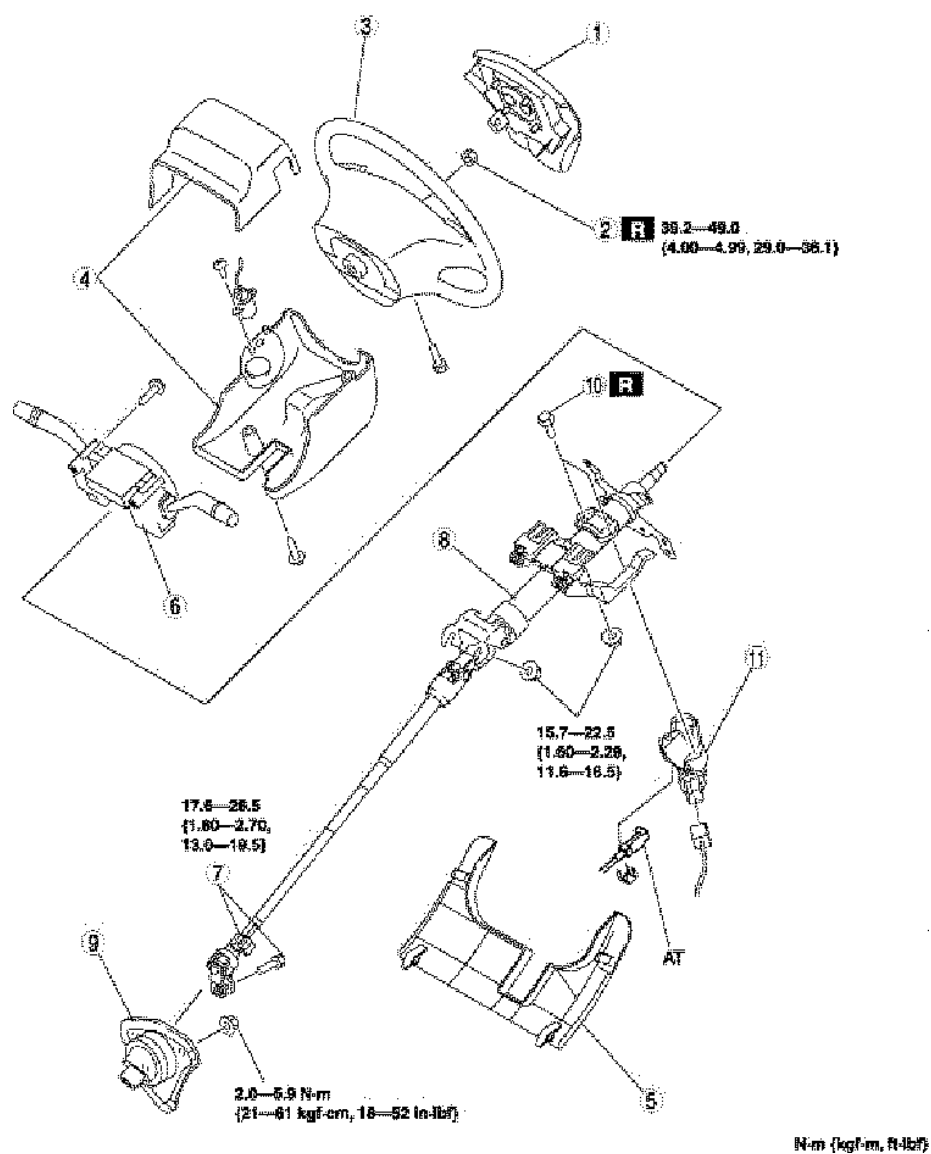
- Handling the air bag module improperly can accidentally deploy the air bag module, which may seriously injure you. Read the service warnings before handling the air bag module. (See SERVICE WARNINGS .)
- After replacing the steering shaft, always set the EPS system to the neutral position to prevent system malfunction. (See EPS SYSTEM NEUTRAL POSITION SETTING .)

NOTE:

- When replacing the steering lock of vehicles with the immobilizer system, perform the following procedure:

(See IMMOBILIZER SYSTEM COMPONENT REPLACEMENT/KEY ADDITION AND CLEARING .)

1. Remove the air cleaner and air cleaner insulator. (See INTAKE-AIR SYSTEM REMOVAL/INSTALLATION .)
2. Remove in the order indicated in the table.
3. Install in the reverse order of removal.
4. After installation, set the EPS system to the neutral position. (See EPS SYSTEM NEUTRAL POSITION SETTING .)



1	Air bag module (See DRIVER-SIDE AIR BAG MODULE REMOVAL/INSTALLATION .)
2	Locknut
3	Steering wheel (See Steering Wheel Removal Note .) (See Steering Wheel Installation Note .)
4	Column cover
5	Under cover

6	Clock spring, combination switch (See COMBINATION SWITCH REMOVAL/INSTALLATION .)
7	Bolt (intermediate shaft) (See Bolt (Intermediate Shaft) Removal Note .) (See Bolt (Intermediate Shaft) Installation Note .)
8	Steering shaft (See Steering Shaft Installation Note .)
9	Dust cover
10	Steering lock mounting bolt (See Steering Lock Mounting Bolt Removal Note .) (See Steering Lock Mounting Bolt Installation Note .)
11	Steering lock

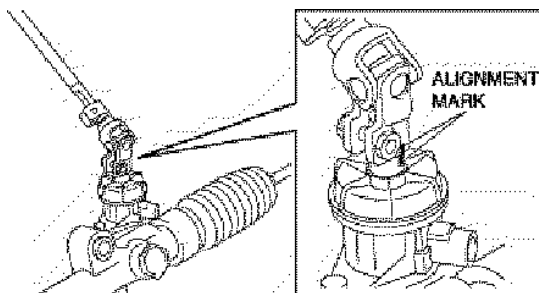
Steering Wheel Removal Note

CAUTION:

- Do not try to remove the steering wheel by hitting the shaft with a hammer. The column will be damaged.
- Set the wheels in the straight-ahead position.
 - Remove the steering wheel using any commercially available puller.

Bolt (Intermediate Shaft) Removal Note

- Place alignment marks on the intermediate shaft joint, and the steering gear and linkage for proper installation.



- Loosen the joint upper bolt.
- Remove the joint lower bolt and detach the intermediate shaft from the steering gear.

Steering Lock Mounting Bolt Removal Note